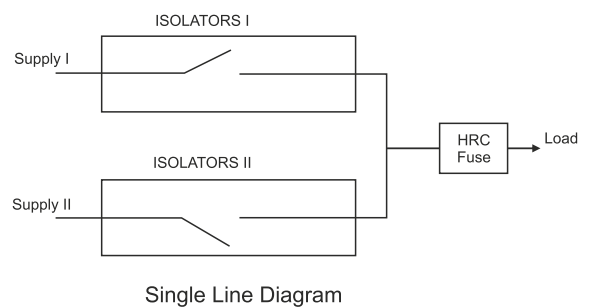
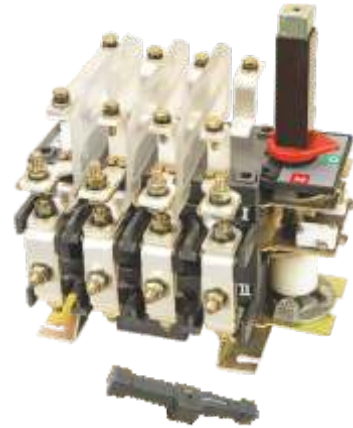


On Load Switch Fuse Change Over

CRYSTAL Switch Fuse Changeovers are manually operated 4 pole switch fuse with compact design for application in low voltage distribution circuits and motor circuits. These comprises of two On Load Switch Disconnectors, which are coupled together and are mechanically interlocked with common outgoing through protection of each & individual phase with HRC fuses. The Switch is compact & suitable for AC23A



RANGE & FRAME SIZE

Current range **125 A to 800 A** in five frame sizes in Four Pole in Open Execution & Thick Sheet Steel Enclosure

Size 1	125 A
Size 2	160 A , 200 A
Size 3	250 A , 320 A
Size 4	400 A , 630 A
Size 5	800 A

SALIENT FEATURES

- While breaking the circuit, guaranteed sufficient air sectioning clearance Utilization category- AC 23A.
- Strong endurance and resistance to heat (Tropicalised).
- Flag indicator for three stable positions (1-0-2) & possible switching on or off, on load, thereby fulfilling the roll of switching device.
- All current carrying parts are of special grade E.T.P. Copper and with silver plated.
- Knife type contact system with self wipe feature allows cleaning of contact during each operation, calling for lesser maintenance and longer life.
- Fuse are isolated from all sides when switch under OFF Position

SPECIFICATIONS

Built to high performance specifications with high quality materials and meticulous quality process with assured best operation on the following parameters

Rated Operational Voltage (V)	415
Rated Insulation Voltage (Ui)	1000 V
Rated Frequency	50/60 Hz
Utilization Category	AC 23 A
Rated impulse withstand Voltage(Uimp)	10 kV

CONFORMS TO STANDARDS

IEC 60947-3

APPLICATIONS

Power Distribution
Manufacturing Process
Industrial Building
Residential Building
Commercial Building
Healthcare
Internet Data Centers
HVAC
Tele Communications